

3 x 20 FOOT HOUSE

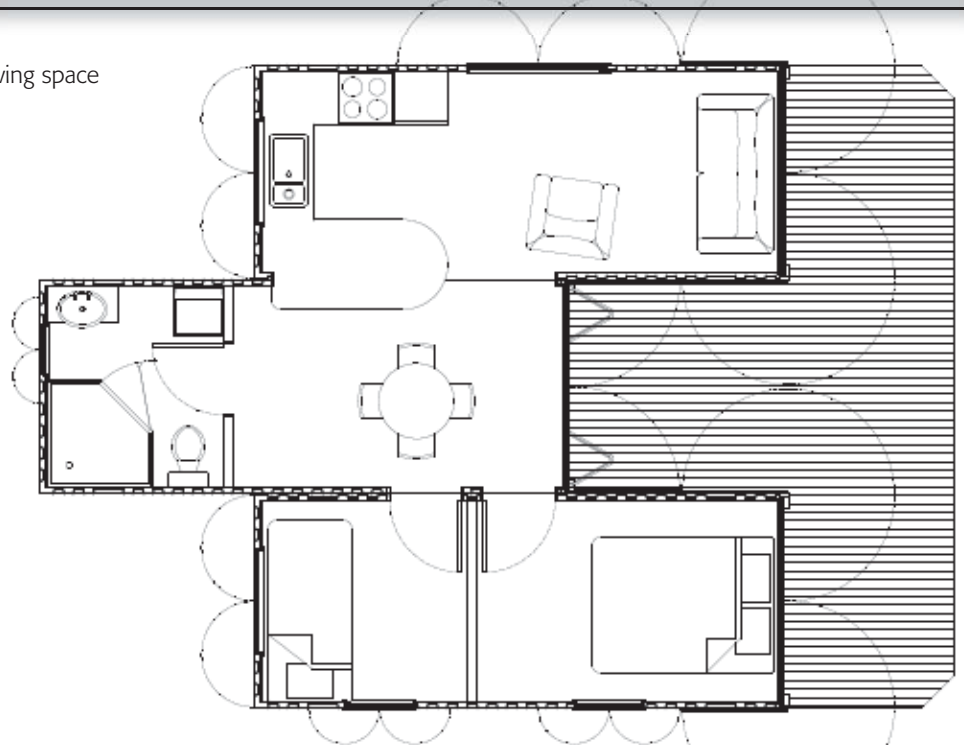
- Massive structural strength
- Modern flexible design features
- Perfect Difficult Sites
- Transportable
- Large Floor Area on a Small Footprint
- Cost Competitive Building Alternative
- Range of Contemporary Designs



area: 45 sq m (484 sq ft) living space

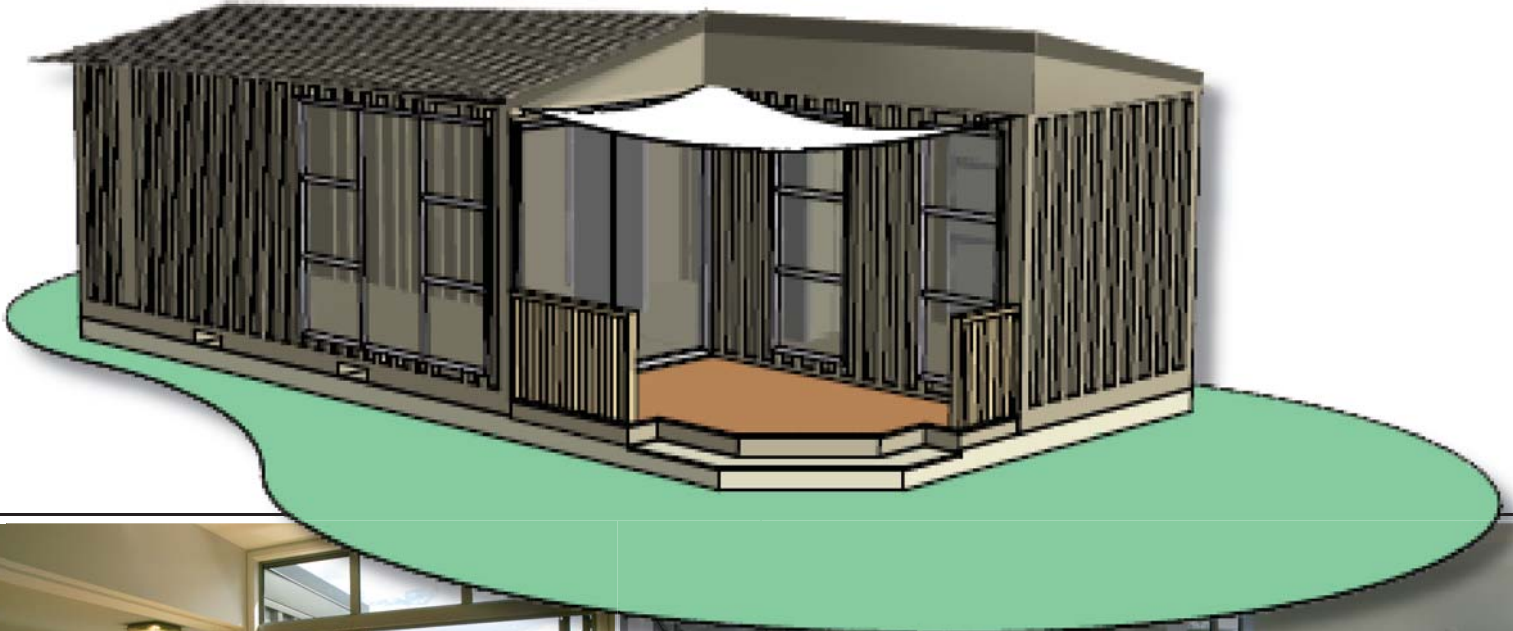
features:

- lounge,
- dining
- kitchen
- bathroom
- 2 x bedrooms
- deck optional



2 x 20 FOOT HOUSE

- Massive structural strength
- Modern flexible design features
- Perfect Difficult Sites
- Transportable
- Large Floor Area on a Small Footprint
- Cost Competitive Building Alternative
- Range of Contemporary Designs



area: 30 sq. m. (323 sq ft)

features:

- lounge
- dining
- kitchen
- 1 x double bedroom
- bathroom
- deck optional

